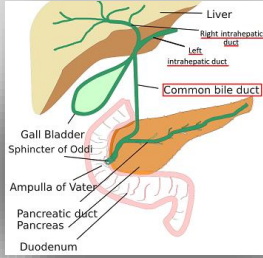
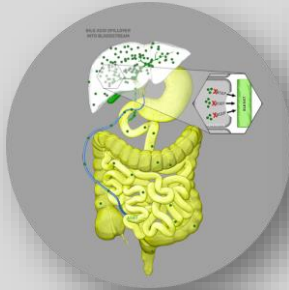





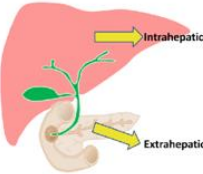
Friday, September 27, 2024 | 8:00 a.m.– 9:00 a.m. | Main Auditorium & Virtual



## Pediatric Cholestasis & Biliary Atresia Review



Jesse Reeves-Garcia, MD  
Attending, Pediatric Gastroenterology  
Nicklaus Children's Hospital  
Miami, FL

<b>Intrahepatic</b>	Hepatobiliary infections Inherited/metabolic dis Ductal anomaly Endocrine dis Prematurity Drugs Ischemia Parenteral nutrition Sepsis
<b>Extrahepatic</b>	Biliary atresia Choledochal cyst Tumor Cholelithiasis

**Objectives:** At the conclusion of this presentation, attendees are expected to:

1. Learn the primary causes of cholestasis in pediatrics
2. Recognize the findings and clues for early diagnosis and referral for biliary atresia
3. Recognize new forms of progressive familial intrahepatic cholestasis (PFIC) and their management



To pre-register and claim CME go to [www.iLearnPeds.com/nextsession](http://www.iLearnPeds.com/nextsession)

Meeting ID: 840 1649 6697  
Password: GR2425



**Accreditation Statement:** Nicklaus Children's Hospital is accredited by the Accreditation Council for Continuing Medical Education to provide continuing medical education for physicians.

**Designation Statement:** Nicklaus Children's Hospital designates this live activity for a maximum of 1 AMA PRA Category 1 Credit(s)<sup>TM</sup>. Physicians should only claim credit commensurate with the extent of their participation in the activity.

**Faculty/Planner Disclosure Policy:** In accordance with the Accreditation Council for Continuing Medical Education's Standards for Integrity and Independence, all planners, teachers, and authors involved in the development of CME content are required to disclose to the accredited provider their relevant financial relationships. Relevant financial relationships will be disclosed to the activity audience.

**Commercial Support Disclosure:** No Commercial Support was received for this activity. The Planning Committee and Staff have no conflicts of interest to declare.