

Thank you for Joining Us!



We hope you had a wonderful virtual interview day with us! In this document, you will find additional information about our residency program that you may refer to during the interview season. Some of this information was shared during the overview presentation of the program. We hope the content will give you a deeper understanding of all our program has to offer! Please feel welcome to contact any of us if you have any further questions.

Thank you and best of luck in all your future pediatric endeavors!





Our Medical Education Team



Maria Behnam-Terneus, DO
Associate Program Director

Maria.Behnam-Terneus@Nicklaushealth.org



Beatriz Cunill-De Sautu, MD
Program Director

Beatriz.Cunill-DeSautu@Nicklaushealth.org



Mark Gabay, DO
Associate Program Director

Mark.Gabay@Nicklaushealth.org



Alina Gonzalez, C-TAGME

Pediatric Program Coordinators

Peds.Coordinator@Nicklaushealth.org



Galia Huerta, C-TAGME



Danelis Hernandez, MD



Andres Rodriguez, MD

Pediatric Chief Residents

Chief.Resident@Nicklaushealth.org



Detailed Curriculum



Our three-year curriculum is designed to meet the ACGME requirements for your pediatric residency training and to give each resident the ability to customize their rotations and experiences. We have many electives which you may choose from to tailor your training, according to your professional goals.

There are two inpatient resident teams which consist of 5-6 PGY-1s with 2 PGY-3 Team leaders (AM/PM). Each floor has General Pediatric/Hospitalist patients, as well as subspecialty patients. Each intern will rotate through the two inpatient teams at least twice. Inpatient rotations are spaced out amongst other rotations throughout your schedules.

The inpatient teams each have a night shift system, which consist of one of the PGY-1 residents on the floor team covering 4-5 night shifts per block. There are no 24-hour calls in the PGY-1 year, while at NCH. There is sporadic cross-coverage during elective rotations. Lastly, there are no calls or night shifts on inpatient floors during the Ambulatory Peds (Clinic) rotation or ER rotation in the PGY-1 year.

Three-Year Rotation Summary

Rotation Category	Duration
Inpatient - Gen Peds/Subspec Wards	9 blocks (5 PGY-1, 2 PGY-2, 2 PGY-3)
Inpatient - Pediatric Intensive Care Unit	2 blocks
Inpatient - Neonatal Intensive Care Unit	2 blocks
Inpatient - Newborn Nursery	1 block
Outpatient - Ambulatory Pediatrics	3 blocks + longitudinal continuity clinic
Outpatient - Emergency Medicine	3 blocks
Outpatient – Other Required Experiences	4 blocks
Subspecialty Electives	6 blocks
Individualized Electives	6 blocks
Vacation	3 blocks (4 weeks/year) + Mini-Holiday

Block Schedule by Training Year

Each academic year is split up into thirteen 4-week long blocks. Residents have 4 weeks of vacation, as well as a 4-day mini-holiday break per academic year. Vacation may be divided into two separate 2-week blocks or taken as one 4-week block.

	1	2	3	4	5	6	7	8	9	10	11	12	13
PGY 1	Vacation	Individualized Elective	Individualized Elective	Subspecialty Elective	Subspecialty Elective	ER	Ambulatory Pediatrics	Newborn (JMH)	Inpt Hosp Med (3T/5T)	Inpt Hosp Med (3S)	Inpt Hosp Med (3S)	Inpt Hosp Med (5T)	Inpt Hosp Med (5T)
PGY 2	Vacation	Individualized Elective	Individualized Elective	Subspecialty Elective	Subspecialty Elective	ER	Ambulatory Pediatrics	Community Advocacy	Developmental-Behavioral Peds	Inpatient / Team Lead	Inpt Subspec (H/O 6T, Cardio 2T, or GI 3N)	PICU	NICU
PGY 3	Vacation	Individualized Elective	Individualized Elective	Subspecialty Elective	Subspecialty Elective	ER	Ambulatory Pediatrics*	Adolescent	Mental Health	Team Lead AM*	Team Lead PM*	PICU*	NICU*

13 total blocks (4 weeks per block); Vacation may be split into 2 week blocks; * Supervisory role experience

Electives

We offer over **50** different electives to choose from. An elective may be a 2-week or 4-week rotation. Electives may be repeated in subsequent years or be requested with a different physician group, if the resident chooses. Residents will meet with their mentor(s), as well as with the PD and/or APD(s), to help guide them in their elective selections based on their track, professional goals, and career interests.

- Adolescent Medicine (add'l)
- Allergy & Immunology
- Anesthesiology
- Bone Marrow Transplant Unit
- Cardiology (Inpt/Outpt)
- Cardiology – Advanced
- CICU
- Child & Adolescent Psychiatry
- Dentistry
- Dermatology
- Developmental-Behavioral Pediatrics (add'l)
- Education
- Endocrinology
- ER - Advanced
- Gastroenterology (Inpt/Outpt)
- GI Procedures
- Genetics (Clinical/Metabolic)
- Global Health
- Hematology-Oncology (Inpt/Outpt)
- Hospitalist
- Infectious Diseases
- Nephrology
- Neurology
- Neuro ICU
- Neurosurgery
- Newborn Nursery (WKB)
- NICU (add'l)
- Nutrition
- Ophthalmology
- Orthopedic Surgery
- Otolaryngology
- Pain Team
- Palliative Care
- Parenting
- Pathology
- Pediatric Care Center (NCH, Galloway, Weston add'l)
- PICU (add'l)
- Primary Care (multiple sites)
- Pharmacy
- Procedures
- Pulmonology
- Radiology
- Research
- Rheumatology
- Rural Pediatrics (FQHC)
- Sedation
- Sports Medicine
- Surgery
- Transport
- Urgent Care
- Urology

Elective Tracks

There are three Elective Tracks based on your professional interests after residency. Each track has a list of suggested rotations to help residents choose electives, which will enhance their training according to their career goals.

- **General Pediatrics Track:** For residents interested in General/Primary Care Pediatrics, Developmental –Behavioral Pediatrics, Community Hospital Medicine or Urgent Care.
 - Additional recommended electives:
 - Dental, ENT, Global Health, Hospitalist, Newborn Nursery at West Kendall Baptist Hospital, Nutrition, Ophthalmology, Parenting, Primary Care (community practice experiences at various sites), Psychiatry, Research, Rural Pediatrics, Urgent Care
 - Additional rotations in Adolescent Medicine, Developmental Pediatrics & Pediatric Care Center Clinic

- **Acute Care Track:** For residents interested in Pediatric Emergency Medicine, Hospital Medicine, PICU, and NICU fellowships.
 - Additional recommended electives:
 - Anesthesia, BMT, Cardiology, CICU, Endocrinology, GI, Hematology/Oncology, Hospitalist, ID, Nephrology, Neurology, Neuro ICU, Neurosurgery, Orthopedics, Pain Team, Palliative Care, Peds Surgery, Procedures, Pulmonology, Radiology, Research, Sedation, and Transport
 - Additional rotations in ER, PICU, and NICU

- **Fellowship Track:** For residents interested in subspecialty fellowship other than those in Acute Care Track.
 - Adolescent - Adolescent Medicine (additional), Endocrinology, GI (outpatient), Heme/Onc (outpatient), Nutrition, Psychiatry, Sports Medicine, Urology, Research
 - Allergy/Immunology – A/I, BMT, ENT, Genetics, Heme/Onc (inpatient/outpatient), ID, Nutrition, Pulmonology, Rheumatology, Research
 - Cardiology –A/I, Anesthesia, Cardio (inpatient/outpatient), Cardio (Advanced), CICU, Genetics, ID, Nephrology, Neurology, NICU (additional), Nutrition, Pain Team, Palliative Care, Pulmonology, Radiology, Sedation, Research

Elective Tracks continued

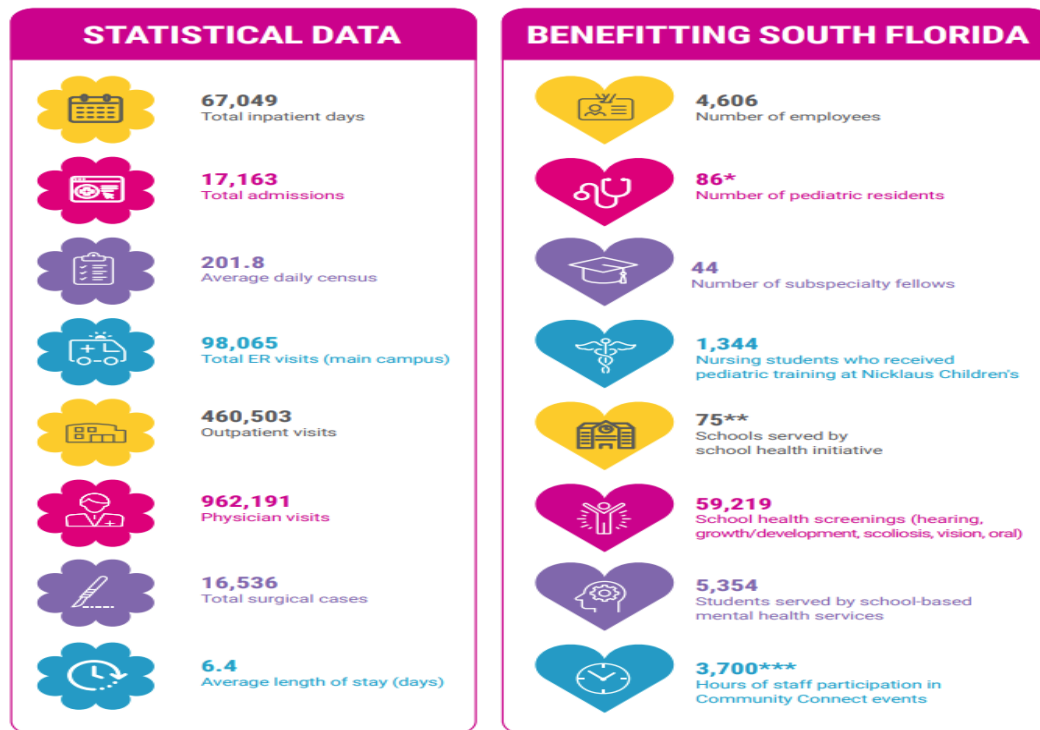
- Endocrinology – Adolescent (additional), A/I, Endo, Genetics, GI (outpatient), Nutrition, Radiology, Rheumatology, Research
- Gastroenterology – A/I, GI (inpatient/outpatient), GI procedures, ID, Neurology, Nutrition, Pain Team, Pathology, Psychiatry, Radiology, Rheumatology, Sedation, Peds Surgery, Research
- Genetics – A/I, Cardiology (inpatient/outpatient), Endocrinology, Genetics, Heme/Onc (inpatient/outpatient), Palliative Care, Research
- Hematology/Oncology – A/I, BMT, Genetics, Heme/Onc (inpatient/outpatient), ID, Nephrology, Nutrition, Neurology, Neuro ICU, Neurosurgery, Pain Team, Palliative Care, Pathology, Psychiatry, Radiology, Rheumatology, Peds Surgery, Research
- Hospitalist – ER (additional), Global Health, Hospitalist, Newborn Nursery at West Kendall Baptist Hospital, ID, Nutrition, Pain Team, Palliative Care, PICU (additional), Radiology, Sedation, Pediatric Surgery, Transport, Research
- Infectious Diseases – A/I, BMT, ENT, Global Health, Heme/Onc (inpatient), Hospitalist, ID, Nephrology, Neurology, Pulmonology, Radiology, Rheumatology, Peds Surgery, Newborn Nursery at West Kendall Baptist Hospital, Pathology, Research
- Nephrology - Cardiology (inpatient/outpatient), Endocrinology, , Heme/Onc (inpatient/outpatient), Nephrology (inpatient/outpatient), NICU, PICU (additional), Radiology, Rheumatology, Urology, Research
- Neurology – Developmental Pediatrics, Neurology, Neuro ICU, Neurosurgery, Ophthalmology, Pain Team, Palliative Care, Radiology, Research
- Pulmonology – A/I, Anesthesia, ENT, NICU (additional), Palliative Care, PICU (additional), Pulmonology, Radiology, Sedation, Research
- Rheumatology – A/I, Dermatology, Genetics, GI (inpatient/outpatient), Nephrology (inpatient/outpatient), Ophthalmology, Pain Team, Radiology, Rheumatology, Research

2023-2024 Resident Research & Scholarly Activity

- All residents give formal teaching presentations annually
- All residents complete quality improvement projects
- 67% of residents participated in funded or non-funded basic science or clinical outcomes research
- 16 PubMed publication, 56 peer-reviewed non-PMID publications
- 276 instances where residents were listed as primary or secondary authors on abstracts, posters, and oral presentations given at international, national, and regional meetings
- 58 NCH Research Day resident presentations
 - Original Research Category:
 - Winning Abstract by a Resident: **Escudero S; Godoy M** ; Totapally BR
 - “Pneumocystis Infection in Hospitalized Children: Demographic, Clinical and Temporal Trends”
 - Case Report Category:
 - Winning Abstract by a Resident: **Ye Tay J; Cadavid E; Muniz Crim A; Medina A**
 - “When EBV Doesn’t Rock: A Case Of EBV Induced Acalculous Cholecystitis”
 - Quality Improvement Category: Overall Winning QI Abstracts by Residents:
 - **Mattos C; Dedic E; Desai D; Durkac L; Durkac A; Elnaji A; Cunill-De Sautu B**
 - “The Sepsis Response: Improving Early Identification”
 - **Garcia A; Majluta A; Aldawsari K; Rodriguez A; Hernandez Trujillo V**
 - “Improvement of Anaphylaxis Diagnosis and Management in the Pediatric Population”



Nicklaus Children's Health System

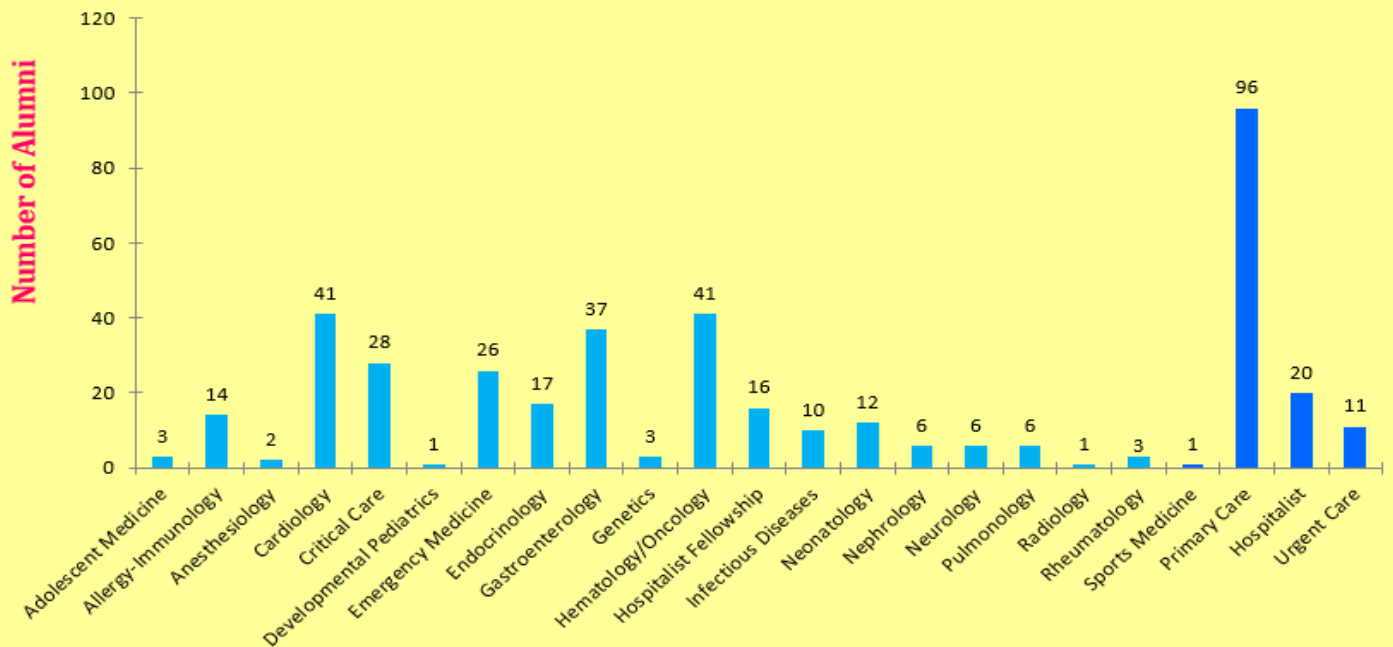


- South Florida's only licensed specialty hospital *exclusively* for children
- Renowned for excellence in all subspecialties of pediatric medicine
- Large underserved diverse patient population, 70% Medicaid/Medicare/Uninsured
- Not-for profit institution (Eligible for Public Service Loan Forgiveness Program)
- Advanced Pediatric Care Pavilion "The Tower" – facility which houses the Cardiology/CICU, PICU, NICU, Pediatrics/Neurology, and Hematology/Oncology/Bone Marrow units, plus Starbucks Café
- New Surgical Tower opened in September 2024
- Designated as a Nursing Magnet Facility
- Affiliation with Florida International University College of Medicine, Rotation site for both NOVA and St. George's Medical Schools
- Largest Pediatric Residency in Florida with 84 residents (28 per class) and 2 Chiefs
- 23 additional training programs (11 in Pediatric subspecialty fellowship programs: Adolescent Medicine, A/I, Cardiology, CICU, Critical Care Medicine, Neuro Critical Care, Emergency Medicine, Gastroenterology, Hematology/Oncology, Hospitalist Medicine & Child Neurology - Advanced)

Post-Graduate Statistics



2010-2024 Post-Graduate Placement Outcomes



Fellowships Training or Primary Care Practice

Pediatric Residency Class of 2024 Post-Graduate Placement Breakdown

Subspecialty Fellowships – 17/28 graduates (61%)

- Allergy – Immunology
 - Larkin Community Hospital, Miami, FL
- Cardiology
 - University of Colorado School of Medicine, Denver, CO
 - University of Texas Mc Govern Medical School, Houston, TX
- Critical Care Medicine
 - Children’s Hospital of Michigan, Detroit, MI
- Emergency Medicine
 - Children’s National Hospital, Washington, DC
 - Inova Fairfax - LJ Murphy Children’s Hospital, Falls Church, VA
- Gastroenterology
 - Cincinnati Children’s Hospital, Cincinnati, OH
 - University of Texas Southwestern (UTSW) Medical Center, Dallas, TX
- Hospital Medicine
 - 2024-2025 Chief Resident – *Awaiting Hospital Medicine Fellowship Match Results*
- Hematology-Oncology
 - University of Colorado School of Medicine, Denver, CO (x 2)
 - Baylor College of Medicine, Houston, TX
 - University of Utah School of Medicine, Salt Lake City, UT
- Nephrology
 - Emory University School of Medicine / Children’s Healthcare of Atlanta, Atlanta, GA
- Neurology
 - Mayo Clinic, Jacksonville, FL
- Pulmonology
 - 2024-2025 Chief Resident – *Awaiting Pulmonology Fellowship Match Results*
- Sports Medicine
 - Baylor College of Medicine, Houston, TX

Pediatric Residency Class of 2023

Post-Graduate Placement Breakdown

General Pediatrics: 11/28 graduates (39%)

- Primary Care (6) – Miami FL, Margate FL, Ocala FL, San Juan PR, Orangeburg SC, Houston TX,
- Primary Care, *Nicklaus Children's Hospital* Pediatric Care Center, Miami, FL
- Adolescent Medicine, *Nicklaus Children's Hospital*, Miami, FL
- Urgent Care, *Nicklaus Children's Hospital* UCC, Miami, FL (2)
- Hospitalist, Inova Fairfax - LJ Murphy Children's Hospital, Falls Church, VA

2023-2024 Chief Residents (2)

- Critical Care Medicine
 - Baylor College of Medicine, Houston, TX
- Hospital Medicine
 - Nicklaus Children's Hospital, Miami, FL



Didactics & Pediatric Board Preparation

Didactics

- Morning Educational Sessions – Handoff discussions, Morning Report Case Discussions (Mondays, Tuesdays, Thursdays), Radiology Conference (Wednesdays) & Grand Rounds (Friday)
- Daily Noon Conference Lectures – Faculty Lectures, Resident Presentations, Evidence Based Medicine / Journal Club sessions, M&Ms, Board Reviews, Wellness Activities, Program Meetings, and other topics (Risk, Patient Safety, DEI, Healthcare Disparities)

Pediatric Board Preparation

- First-hand exposure to broad pathology from common to rare pediatric diagnoses
- Annual subscription to AAP Pediatric Board PREP online question bank
- MedStudy Board Review Curriculum – includes a 5 book series covering high-yield board topics, flash cards, and additional online question bank subscription
- Attendance to our three day NCH Board Review Course by all PGY-3s
- Weekly board review sessions in the Spring developed by the Chief Residents
- Annual In-training Exams (ITE) to help assess performance compared to national averages for level of training
- Structured Learning Plan – Designed to assist residents who fall below the national ITE average for their level of training, but open for all residents to participate in!



Additional Information



- Miami Video:

<https://www.youtube.com/watch?v=Y68mwXWvoVQ>

- NCH Virtual Tour video (Full Version):

<https://www.youtube.com/watch?v=6Y3-fjuVPSA>



Visit Our Instagram Page: <https://www.instagram.com/nicklausmeded/>

Visit Our Website: <https://www.nicklauschildrens.org/pedsresidency>