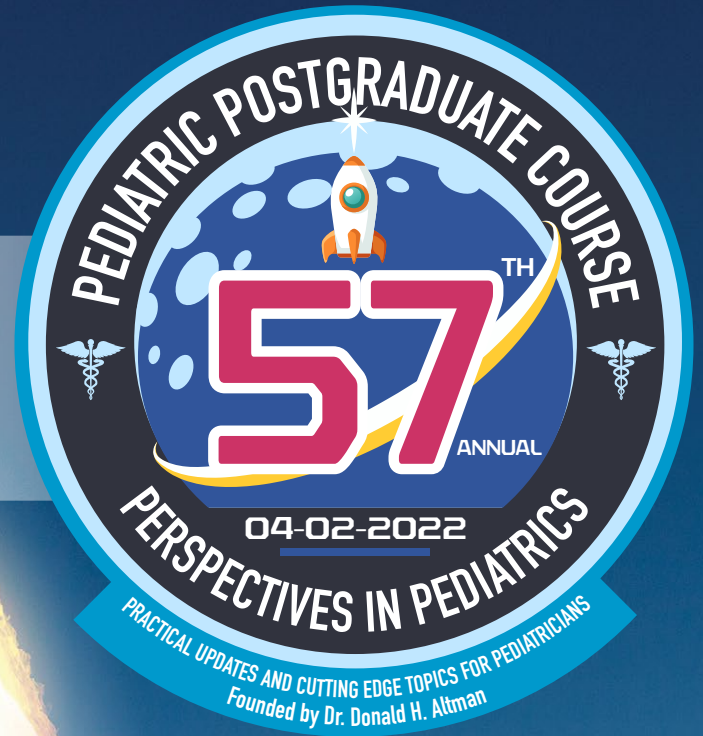


# PROGRAM



Nicklaus  
Children's  
Hospital

Launching  
**April 2, 2022**  
(Live-Virtual)



(Registrants will Have Content  
Access for 6 months)

## VIRTUAL Education SOARING TO THE CLOUDS



PART 2  
**MOC**

Approved by the ABP as a part 2  
Activity for General Pediatrics  
Maintenance of Certification  
(MOC) – 10 points



Accreditation Statement: Nicklaus Children's Hospital is accredited by the Accreditation Council for Continuing Medical Education to provide continuing medical education for physicians.

Designation Statement: Nicklaus Children's Hospital designates this live activity for a maximum of 10 AMA PRA Category 1 Credit(s)™. Physicians should claim only the credit commensurate with the extent of their participation in the activity.

Faculty/Planner Disclosure Policy: In accordance with the Accreditation Council for Continuing Medical Education's Standards for Integrity & Independence in Accredited Continuing Education, all planners, teachers, and authors involved in the development of CME content are required to disclose to the accredited provider their relevant financial relationships. Relevant financial relationships will be disclosed to the activity audience.



1-800-445-9340 | [ppgcpip.com](http://ppgcpip.com)

## Accreditation Statement

Nicklaus Children's Hospital is accredited by the Accreditation Council for Continuing Medical Education to provide continuing medical education for physicians.



## Designation Statement

Nicklaus Children's Hospital designates this live activity for a maximum of 10 *AMA PRA Category 1 Credit(s)*<sup>™</sup>. Physicians should only claim credit commensurate with the extent of their participation in the activity.



## Faculty/Planner Disclosure Policy

In accordance with the Accreditation Council for Continuing Medical Education's Standards for Integrity & Independence in Accredited Continuing Medical Education, all planners, teachers, and authors involved in the development of CME content are required to disclose to the accredited provider their relevant financial relationships. Relevant financial relationships will be disclosed to the activity audience.

The Staff and the Planners of this event had no conflict of interests or financial relationships to disclose.



### ABP MOC Recognition Statement:

Successful completion of this CME activity, which includes participation in the activity, and individual assessment of and feedback to the learner, enables the learner to earn up to 10 MOC points

in the American Board of Pediatrics' (ABP) Maintenance of Certification (MOC) program. It is the CME activity provider's responsibility to submit learner completion information to ACCME for the purpose of granting ABP MOC credit. (PARS Course ID 201839098)

## MOC Part 2 Points

In the 2022 PPGC, the CME program is approved by the American Board of Pediatrics (ABP) for a maximum of up to 10 MOC Part 2 Self-Assessment Points. Only physicians certified by the American Board of Pediatrics and its specialties can claim a maximum of 10 MOC Part 2 points. In order to claim the MOC Part 2 points, physicians must also meet the following criteria:

1. Register specifically for an MOC Part 2 package after registration for the PPGC Course (\$25 additional fee)
2. Participate in the PPGC course and watch the sessions live or on-demand
3. Complete and submit the MOC Part 2 self-assessment
4. Achieve a score of > 70% on the self-assessment test (Two attempts to answer the test are allowed)
5. Participants will be given feedback on the self-assessment test questions

## Faculty Disclosure/Conflict of Interest Resolution Statement

The "Conflict of Interest Disclosure Policy" of Nicklaus Children's Hospital requires that faculty participating in any CME activity disclose to the audience any relationship(s) they have with an ineligible company.

Conflicts of interests disclosed are resolved prior to the activity. Any presenter whose disclosed relationship proves to create a conflict of interest that cannot be resolved, with regard to their contribution to the activity will not be permitted to present.

Nicklaus Children's Hospital also requires that faculty participating in any CME activity disclose to the audience when discussing any unlabeled or investigational use of any commercial product or device not yet approved for use in the United States.

Whenever a faculty member has reported financial relationships with one or more ineligible company, Nicklaus Children's Hospital works with them to mitigate such conflicts prior to the course to ensure that the content presented is free of commercial bias.

The content of the presentation is required to meet this standard:

- A slide will be prepared addressing disclosures;
- Disclosures will also be added to handouts and the syllabus;
- Disclosures will be announced by the moderator verbally to participants.
- Content is peer-reviewed by a member of the CME committee prior to the course.

We have notified our speakers that we will be disclosing this information to our learners before their presentation and together we have decided on the following strategy(ies) to mitigate conflicts of interest:

- Peer-review of the presentation prior to the course
- A slide addressing his/her disclosures.
- Disclosures will also be added to handouts and the syllabus in addition.
- Disclosures will be announced by the moderator verbally to the participants.
- Sessions are monitored by a planning group members

All COIs have been mitigated prior to the conference.

## Americans with Disabilities Act

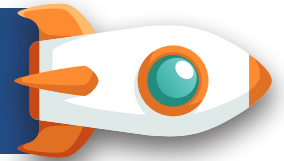
Nicklaus Children's Hospital fully complies with the requirements of the ADA and with the rules and regulations thereof. If any participant of the Nicklaus Children's Hospital Pediatric Postgraduate Course, "Perspectives in Pediatrics" is in need of special accommodations, please contact the course registrar.

## Commercial Support

This live activity is partially supported by an educational grant from Mead Johnson Nutrition.



# COURSE AGENDA (Live-VIRTUAL)



## DAY 1 – Saturday, April 2, 2022

7 CME Credit Hours and  
7 MOC Part 2 Points Provided

10 a.m. - 10:15 a.m. Time for the attendees to connect & Welcome

10:15 a.m. - 10:55 a.m. **P101– The Donald Altman Lectureship Opening Plenary - New Frontiers in Education: Where We Are and Where We Should Be Heading?**  
*Janet R. Reid, MD, FRCPC, MSeD*



Medical Education has evolved over the years making use of technology in education. The pandemic has also changed the way we teach and learn. This session will focus on the concepts of adaptive learning and learning community of practice in the context of adult learning principles. The speaker will discuss tips for enhancing engagement in the learning environment.

Learning Objectives: At the conclusion of this session, participants are expected to:

- 1- List at least four characteristics of adult learners.
- 2- Define the terms “adaptive learning” and “learning community of practice” Discuss three ways to enhance engagement in the learning environment

10:55 a.m. - 11:00 a.m. Q&A Panel

11:00 a.m. - 11:30 a.m. **S102– Trauma-Informed Care**  
*James H. Duffee, MD, MPH*



Adverse Childhood Events (ACEs) due to illness, foster care, family divorce, poverty, homelessness, and food insecurities impact the development of children. This session highlights the role of pediatricians in mitigating the damaging effects of trauma and promoting resilience for better outcomes.

Learning Objectives: At the conclusion of this session, participants are expected to:

- 1- Discuss Trauma Informed Care (TIC) as secondary prevention against lifelong effects of early childhood adversity.
- 2- Define pediatric medical traumatic stress and be able to identify children and families at risk for maladaptive response
- 3- Implement basic principles and strategies of TIC, including promotion of resilience and identification of secondary traumatic stress.

11:30 a.m. - 12:00 p.m. **S103– Children affected by COVID-19 Associated Orphanhood and Death of Caregivers**  
*Andrés Villaveces, MD, MPH, PhD*



The COVID-19 pandemic has impacted many family units worldwide and resulted in loss of parents, care takers, and grand-parents. This session highlights the problem of orphanhood due to COVID-19 pandemic and its impact on children. Raising awareness of primary care providers of this emerging problem will help shed the light on this issue with the aim to help find solutions.

Learning Objectives: At the conclusion of this session, participants are expected to:

- 1- Highlight the impact of COVID-19 on orphanhood globally
- 2- Link the dynamic nature of the pandemic to the second order effects specifically COVID-19-associated orphanhood and caregiver deaths
- 3- Highlight evidence based responses aimed at protecting children and youth affected by COVID-19-associated orphanhood and caregiver deaths



12:00 p.m. - 12:30 p.m.

**S104- The Basics of Palliative Care for the Medical Home**

***Teresa Vente, DO, MPH***



The medical home cares for children and young adults who may face varying degrees of illnesses, chronic conditions, and losses in patients, their siblings or family members. This session will focus on the degree to which the medical home can provide in terms of palliative care services and what resources are available.

Learning Objectives: At the conclusion of this session, participants are expected to:

- 1- Define pediatric palliative care
- 2- Identify essential primary palliative care skills for pediatric providers
- 3- Recognize when patients may benefit from referral to pediatric palliative care specialists
- 4- Identify pediatric palliative care resources for pediatric providers and families

12:30 p.m. - 12:45 p.m.

**Q&A Panel**

12:45 p.m. - 1:30 p.m.

**LUNCH BREAK**

1:30 p.m. - 2:00 p.m.

**S105- A Panel of Unintended Consequences: Decoding the Indications & Interpretation of Allergy Testing**

***Daniel Urschel, MD***



Panels of allergy testing have been overused and misused in certain situations. In many cases the interpretation of the results can have a lifelong impact on the quality of life of patients. This session will focus on the indications and interpretations of panels of allergy tests in pediatrics

Learning Objectives: At the conclusion of this session, participants are expected to:

- 1- Be aware of the harms of unnecessary food avoidance
- 2- Understand indications for food allergy testing
- 3- Understand the importance of interpreting allergy tests with clinical history

2:00 p.m. - 2:30 p.m.

**S106- Common Skin Infections and Infestations for the Primary Care Pediatric Office**

***Ana Duarte, MD***



Skin infections and infestations are common clinical presentations of infants and children to the emergency department or pediatric primary care clinic. This session will present a selection of common skin infections and infestations encountered in various age groups, diagnosis and management strategies, and criteria for referrals

Learning Objectives: At the conclusion of this session, participants are expected to:

- 1- Diagnose and treat impetigo
- 2- Diagnose and treat herpes virus infections
- 3- Diagnose and treat fungal scalp infections

2:30 p.m. -3:00 p.m.

**S107- Cases I learned from (2 Specialties) - [Pediatric Gastroenterology & Pediatric Neurology]**

***Annette L. Medina, MD***

***Marytery Fajardo, MD***



This is a case-based discussion of interesting cases in various pediatric specialties. Each specialist will discuss 2 cases that have educational value either because of an unusual presentation of a common diagnosis, or a presentation of a rare/ unusual condition/ diagnosis

Learning Objectives: At the conclusion of this session, participants are expected to:

- 1- Analyze neurologic symptoms in the context of neuroanatomy and clinical evolution
- 2- Review neurologic symptoms of paraneoplastic syndromes in children
- 3- Consider nuances when building differential diagnoses in complex cases

3:00 p.m. - 3:15 p.m. Q&A Panel

3:15 p.m. - 3:30 p.m. BREAK

3:30 p.m. - 4:00 p.m. **S108- Optimizing Sleep Health in Children & Teens**  
*Dana Lynn McMakin, PhD*



Sleep hygiene is an important factor that contributes to wellbeing, healthy growth, and promotes learning. This session will address the role of sleep as a strategy to optimize overall mental and physical health in children and teens and the role of the medical home in promoting sleep as health tool

Learning Objectives: At the conclusion of this session, participants are expected to:

- 1- Define and assess sleep health in school-aged children and teens
- 2- Recognize common contributors to poor sleep health in school-aged children and teens, with attention to those that are modifiable.
- 3- Identify straightforward strategies for optimizing sleep health in school-aged children and teens

4:00 p.m. - 4:30 p.m. **S109- Sudden Cardiac Death in the Young**  
*Ronald Kanter, MD*



Sudden cardiac death in the young athlete, while rare, it can be severely devastating. This session will review the common causes of sudden cardiac death in the young and discusses prevention and early diagnosis of contributing factors

Learning Objectives: At the conclusion of this session, participants are expected to:

- 1 Know the incidence and most common etiologies of sudden cardiac death in the young.
- 2- Know the warning signs and symptoms in young patients at risk of sudden cardiac death and of how to discriminate these signs and symptoms from those associated with benign conditions.
- 3- Learn the current status of screening of young patients for conditions associated with sudden cardiac death.
- 4- Know the proper evaluation of survivors of young patients having sudden cardiac arrest and of family members of young patients who do not survive.

4:30 p.m. - 4:40 p.m. Q&A Panel

4:40 p.m. - 4:55 p.m. BREAK

4:55 p.m. - 5:25 p.m. **S110- Climate Change and Impact on Health**  
*Cheryl L. Holder, MD*



Climate change has resulted in multiple factors that negatively impact the health and wellbeing of children. This session will highlight the negative impact of climate change on specific health conditions in the pediatric patient

Learning Objectives: At the conclusion of this session, participants are expected to:

- 1- Learn about climate change and factors affecting it
- 2- Understand the importance of the impact of climate change on health of children and families
- 3- Learn ways to mitigate or address the climate change effect on health

5:25 p.m. - 5:55 p.m.

**S111- Pharmacogenetics: One Drug Does Not Fit All**

*Yana Vorontsova, PharmD, MBA*



Pharmacogenetics has revolutionized the field of pharmacogenetics. This session reviews the basics of pharmacogenetics and its role in clinical practice. Examples will be provided on opportunities to tailor pharmacologic therapies and personalize it to the specific patient and their genetic make-up

Learning Objectives: At the conclusion of this session, participants are expected to:

- 1- Understand the basics of pharmacogenetics
- 2- Understand the importance of pharmacogenetics in clinical practice
- 3- Recognize the current state and expanding role of pharmacogenetics in clinical practice

5:55 p.m. - 6:05 p.m.

**Q&A Panel**

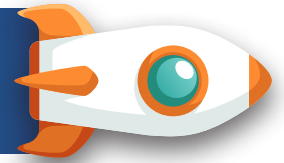
6:05 p.m.

**ADJOURN – DAY 1**





# COURSE AGENDA (Live-VIRTUAL)



## DAY 2 – Sunday, April 3, 2022

3 CME Credit Hours and  
3 MOC Part 2 Points Provided

10 a.m. - 10:10 a.m. Time for the attendees to connect & Welcome

10:10 a.m. - 10:40 a.m. **S201- New Guidelines for the Evaluation & Management of Well-Appearing Febrile Infants 8-60 Days Old: What Changed and Why?**

*Kenneth Roberts, MD*



Fever without a source in an infant > 8 days often results in a cascade of work-up and inpatient treatments. In the past few years, several prediction models have been developed to try to identify the small number of febrile infants who truly have a serious bacterial infection. Studies have led to the revision of the guidelines for the evaluation and management of well-appearing febrile infants 8-60 days old

Learning Objectives: At the conclusion of this session, participants are expected to:

- 1- Identify where clinicians are provided options in the new AAP Febrile Infant Guideline
- 2- Specify the basis for the creation of 3 age groupings in the first 60 days of life
- 3- Apply the recommendations as guidelines rather than absolute rules

10:40 a.m. - 11:10 a.m. **S202- Red Flag Warnings & Vaccine Preventable Infections**

*Mary Anne Jackson, MD*



Many vaccine preventable infections can be serious and present a threat to the health and well-being of children making early recognition and timely management an important task. This case-based session will discuss red flags and warnings for vaccine-preventable conditions that require prompt action and early identification in the unvaccinated child. The session will emphasize effective vaccine educational strategies

Learning Objectives: At the conclusion of this session, participants are expected to:

- 1- Recognize 5 infectious diseases that are vaccine preventable and require prompt recognition
- 2- Identify epidemiologic risks and other clues to suggest the pathogen and diagnostics
- 3- Understand that treatment is disease specific and infection control strategies depend on contagion
- 4- Recognize effective vaccine educational strategies

11:10 a.m. - 11:40 a.m. **S203- Is Your Office Infection-Prevention Ready**

*Kristin Heisey, MSN, RN, NEA-BC*



The pandemic has brought infection prevention practices and public health measures to the forefront. Pediatric offices more than ever had to implement public health strategies, invest in PPEs, cleaning solutions, masks and shields at a time where things were constantly changing. This session is aimed to assist the pediatric office in following the evidence when it comes to infection prevention practices in terms of effectiveness of various PPEs and cleaning measures to ensure safety of patients and staff

Learning Objectives: At the conclusion of this session, participants are expected to:

- 1- Describe the principles of standard precautions
- 2- Describe the principles of transmission-based precautions
- 3- Describe the principles of disinfection and sterilization
- 4- Provide next steps in evaluating your facility

11:40 a.m. - 11:55 a.m. Q&A Panel

11:55 a.m. - 12:10 p.m. BREAK

12:10 p.m. - 12:40 p.m. **S204- Sports Clearance for Athletes after COVID-19-associated Myocarditis**  
*Christopher Snyder, MD*



Viral myocarditis has been reported in young teens following COVID-19 infection. This session will discuss the approach to myocarditis and the recommended course to follow in the management of this entity including when to clear impacted patients for sports participation

Learning Objectives: At the conclusion of this session, participants are expected to:

- 1- Know the clinical presentation of COVID-19 Associated myocarditis in children
- 2- Learn the approach to myocarditis
- 3- Be able to appropriately clear athletes with myocarditis for return to play safely

12:40 p.m. - 1:10 p.m. **S205- A Sit Down Discussion of Innovative Practice Models: Towards a Better Standardized Comprehensive Care**



*Veronica Etinger, MD*

*Maria Milla, MD, MPH*

*Lissette M. Perez-Lima, PhD*

**Moderator:** *Marisa Azaret, PsyD*

This session is an interview-style sit down discussion with 2-3 interviewees who will share innovative practice models that lead to improved care including: (1) Pathways Creation (2) Co-locating mental health professional in a pediatric clinic (3) Antimicrobial stewardship implementation. Examples and data will be provided including a practical approach to implementation

Learning Objectives: At the conclusion of this session, participants are expected to:

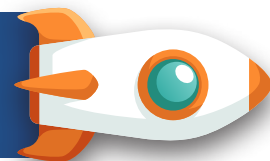
- 1- Learn what clinical pathways are and their purpose
- 2- Understand the concept of high value care
- 3- Learn the process of pathway development, implementation and monitoring.
- 4- Increase focus on mental health prevention
- 5- Decrease gap between symptoms and access to care
- 6- Increase mental health awareness and education

1:10 p.m. - 1:20 p.m. Q&A Panel

1:20 p.m. ADJOURN – DAY 2







## Guest Faculty

### **James H. Duffee, MD, MPH**

Policy Chair, Executive Committee of the AAP Council  
on Community Pediatrics  
Clinical Associate Professor of Pediatrics and  
Psychiatry  
Wright State University Boonshoft School of Medicine  
Dayton, Ohio

### **Cheryl L. Holder, MD**

Associate Dean for Diversity, Equity, Inclusivity, and  
Community Initiatives  
Associate Professor  
Humanities, Health, and Society  
Florida International University  
Herbert Wertheim College of Medicine  
Miami, Florida

### **Mary Anne Jackson, MD**

Dean, Professor of Pediatrics  
University of MO-Kansas City School of Medicine  
Division of Infectious Diseases  
Children's Mercy Kansas City  
Kansas City, Missouri

### **Janet R. Reid, MD, FRCPC, MSc**

Vice Chair of Education  
Department of Radiology  
Children's Hospital of Philadelphia  
Patricia Borns Endowed Chair in Radiology Education  
Associate Professor of Radiology  
University of Pennsylvania, Perelman School of  
Medicine  
Philadelphia, Pennsylvania

### **Kenneth Roberts, MD**

Chairman Emeritus  
Department of Pediatrics  
University of North Carolina, Chapel Hill  
Chapel Hill, North Carolina

### **Christopher Snyder, MD**

Attending, Pediatric Cardiology & Electrophysiology  
University Hospitals; Rainbow Babies & Children's  
Hospital  
Professor, Case Western Reserve University School of  
Medicine  
Cleveland, Ohio

### **Daniel Urschel, MD**

Pediatric Allergy-Immunology  
Dayton Children's Hospital  
Dayton, Ohio

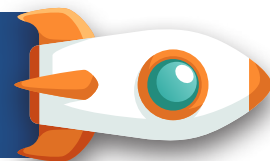
### **Teresa Vente, DO, MPH**

Attending Physician, Palliative Care  
Program Director; Pediatric Palliative Care Medicine  
Fellowship  
Assistant Professor of Pediatrics  
Northwestern University Feinberg School of Medicine  
Ann & Robert H. Lurie Children's Hospital  
Chicago, Illinois

### **Andrés Villaveces MD, MPH, PhD**

Senior Scientist  
Field Epidemiology and Prevention Branch  
Division of Violence Prevention, NCIPC  
Centers for Disease Control and Prevention  
Atlanta, Georgia

# FACULTY



## Host Faculty

### **Ana Duarte, MD**

Attending, Pediatric Dermatology  
Nicklaus Children's Hospital  
Miami, Florida

### **Veronica Etinger, MD**

Director, Division of Pediatric Hospital Medicine  
Nicklaus Children's Pediatric Specialists  
Nicklaus Children's Hospital  
Miami, Florida

### **Marytery Fajardo, MD**

Attending, Pediatric Neurology  
Nicklaus Children's Hospital  
Miami, Florida

### **Kristin Heisey, MSN, RN, NEA-BC**

Director Infection Prevention and Control  
Infection Control  
Nicklaus Children's Hospital  
Miami, Florida

### **Ronald Kanter, MD**

Attending, Pediatric Cardiology  
Nicklaus Children's Pediatric Specialists  
Nicklaus Children's Hospital  
Miami, Florida

### **Dana L. McMakin, PhD**

Director of REMEDY Research Group  
Associate Professor, Department of Psychology  
Center for Children and Families  
Florida International University  
Licensed Clinical Psychologist  
Nicklaus Children's Hospital  
Miami, Florida

### **Annette L. Medina, MD**

Attending, Pediatric Gastroenterology  
Nicklaus Children's Pediatric Specialists  
Nicklaus Children's Hospital  
Miami, Florida

### **Maria Milla, MD, MPH\***

Section Chief, Pediatric Care Centers  
Nicklaus Children's Pediatric Specialists  
Nicklaus Children's Hospital  
Miami, Florida

### **Lissette M. Perez-Lima, PhD**

Clinical Psychology  
Department of Psychology  
Nicklaus Children's Pediatric Specialists  
Nicklaus Children's Hospital  
Miami, Florida

### **Yana Vorontsova, PharmD; MBA**

Pharmacogenomics Program Leader  
Nicklaus Children's Research Institute  
Nicklaus Children's Hospital  
Miami, Florida



*\*Denotes Scientific Planning Committee Member*

## Scientific Planning Committee

### **Marisa Azaret, PsyD**

Chief, Department of Clinical Psychology

### **Maria Behnam-Terneus, DO**

Associate Director, Pediatric Residency Program

Associate Director, Pediatric Hospital Medicine Fellowship Program

### **Jefry Biehler, MD, MPH**

FIU Chair of Pediatrics

### **Beatriz Cunill-De Sautu, MD**

Pediatric Residency Program Director

### **Lauren Chiriboga, MD**

Pediatric Chief Resident

### **Rani Gereige, MD, MPH**

PPGC Course Chair

CME Committee Chair, Director of Medical Education

### **Erin Hernandez, EdD, APRN, PNP-AC/PC**

Director, Advanced Practice

### **Elizabeth Menocal, CPMSM, CPCS**

Vice President; Clinical Affairs – Medical Administration

### **Marcos Mestre, MD, MBA**

Chief Medical Officer, Nicklaus Children's Hospital

### **Maria Milla, MD**

General Pediatrics, Director of Pediatric Care Center

### **Maria Ramon-Coton, MD**

Chief; Urgent Care Centers

### **Clara Reyes-Miranda, APRN**

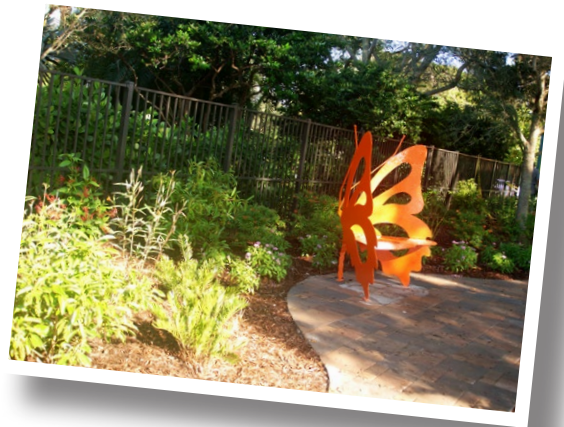
Allied Health, Pediatric Hospital Medicine

### **Melanie Suaris, MD**

Pediatric Chief Resident

### **Marry Vuong, PharmD**

Clinical Pharmacist



## Continuing Medical Education Staff

### **Gabriela Martinez**

Marketing, Web Design, and NCH-iLearn Management,  
CME Specialist; Department of Medical Education, Nicklaus  
Children's Hospital



## Faculty, Moderators, and Planners' Disclosures

Listed below are the Faculty, Planners, Scientific Planning Committee Members, and Staff disclosures of the presence or absence of relevant financial relationships, conflicts of interests (COIs) in the past 24 months, or discussion of investigational/ unapproved drugs or devices:

Faculty/Moderator/or Planner	Person with COI or financial relationship	Company	Role/ Relationship	Discussion of Investigational/ Unlabeled Drugs or Devices
Marisa Azaret, PsyD*	N/A	N/A	N/A	N/A
Maria Behnam-Terneus, DO*	N/A	N/A	N/A	N/A
Jefry Biehler, MD, MPH*	N/A	N/A	N/A	N/A
Lauren Chiriboga, MD*	N/A	N/A	N/A	N/A
Beatriz Cunill-De Sautu, MD*	N/A	N/A	N/A	N/A
Ana Duarte, MD	Self	Pfizer Pierre Fabre Regeneron-Sanofi	Professional Services (Speaker) Professional Services (Speaker) Professional Services (Speaker)	N/A
James H. Duffee, MD, MPH	N/A	N/A	N/A	N/A
Veronica Etinger, MD	N/A	N/A	N/A	N/A
Marytery Fajardo, MD	N/A	N/A	N/A	N/A
Rani S. Gereige, MD, MPH FAAP*	N/A	N/A	N/A	N/A
Kristin Heisey, MSN, RN, NEA-BC	N/A	N/A	N/A	N/A
Erin Hernandez, EdD, APRN, PNP-AC/PC*	N/A	N/A	N/A	N/A
Cheryl L. Holder, MD	N/A	N/A	N/A	N/A
Mary Anne Jackson, MD, FAAP, FPIDS, FIDSA	N/A	N/A	N/A	N/A
Ronald Kanter, MD	N/A	N/A	N/A	N/A
Gabriela Martinez*	N/A	N/A	N/A	N/A
Dana L. McMakin, PhD	N/A	N/A	N/A	N/A
Annette L. Medina, MD	N/A	N/A	N/A	N/A
Elizabeth Menocal, CPMSM, CPCS*	N/A	N/A	N/A	N/A
Marcos Mestre, MD*	N/A	N/A	N/A	N/A
Maria Milla, MD, MPH*	N/A	N/A	N/A	N/A
Lisette M. Perez-Lima, PhD	N/A	N/A	N/A	N/A
Maria Ramon-Coton, MD*	N/A	N/A	N/A	N/A
Janet R. Reid, MD, FRCPC, MSED	N/A	N/A	N/A	N/A
Clara Reyes-Miranda, APRN*	N/A	N/A	N/A	N/A
Kenneth Roberts, MD	N/A	N/A	N/A	N/A
Christopher Snyder, MD	N/A	N/A	N/A	N/A
Melanie Suaris, MD*	N/A	N/A	N/A	N/A
Daniel Urschel, MD	N/A	N/A	N/A	N/A
Teresa Vente, DO, MPH	N/A	N/A	N/A	N/A
Andrés Villaveces MD, MPH, PhD	N/A	N/A	N/A	N/A
Yana Vorontsova, PharmD; MBA	N/A	N/A	N/A	N/A
Marry Vuong, PharmD*	N/A	N/A	N/A	N/A

\*Denotes Scientific Planning Committee Member, Planner, or CME Staff

All COIs have been mitigated prior to the meeting. Faculty will disclose financial relationships or COIs to the audience verbally and/or with a slide at the beginning of their presentation.





Nicklaus  
Children's  
Hospital



1-800-445-9340 | [ppgcpip.com](http://ppgcpip.com)